

# GR261LH



MSDS



UN38.3



## Features



### Ultimate Reliable

- Optional semi-solid batteries, 80% lower thermal risk
- Compliant with international standard certification
- High protection up to IP55 and C4H anti-corrosion level
- Multi-level fire protection and battery protection



### Maximum Efficiency

- Smart liquid Cooling System for efficient dissipation
- Automatic optimal EMS strategy control for best efficiency
- Self-developed BMS and EMS, project-level customization
- Integrate artificial intelligence algorithms



### Infinite Flexibility

- All-in-one design, integrated battery, PCS, MPPT and STS
- Scalable parallel support for multiple systems
- Cloud O&M, fast fault analysis and handling
- Multi-Scene Use: Support PV access and on/off grid switch  $\leq 20\text{ms}$

- 10F, BTR New Energy Technology Building, Guangyuan 2 Road, Guangming, Shenzhen
- Tel: (86)0755-88658100 E-mail: [sales@gooree.com](mailto:sales@gooree.com)
- Web : <https://en.gooree.com>

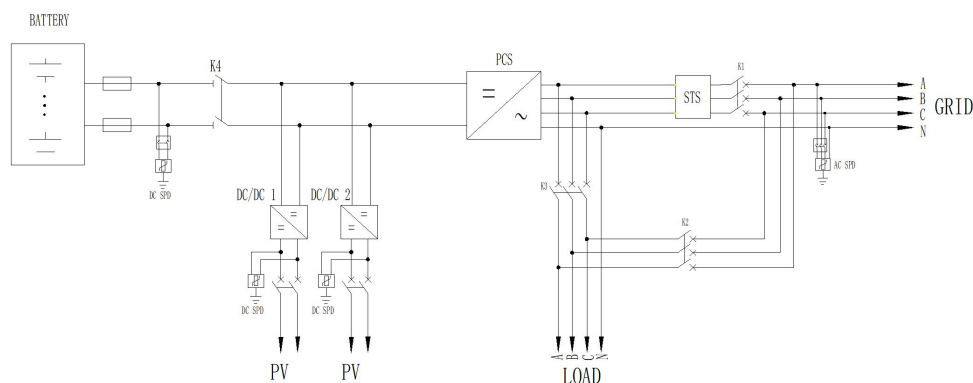


Facebook



LinkedIn

# Electrical Diagram



## Specification Parameters

Model	GR261LH
<b>DC Side</b>	
Cell type	LFP / 314Ah
Battery capacity (BOL)	261.24 kWh / 249 kWh (Option)
System configuration	(52S1P) 5S * 1
Rated DC voltage	832 V
DC voltage range	702 ~ 949 V
Charge/discharge rate	≤0.5P
Cooling Method	Liquid cooling
<b>PV Side</b>	
Rated MPPT power	60kW
Number of MPPT inputs	4
PV Open-Circuit Voltage	200-900V
MPPT voltage range	200-850V
Rated voltage	600V
PV Start-up Voltage	250V
Max PV current	100A+100A+100A+100A
<b>AC Side</b>	
Rated AC power	130 kW / 125 kW / 124.9 kW / 100kW / 99.9 kW (Optional)
Rated AC voltage	400 V
Rated frequency	50 / 60 Hz
AC connection	3W+PE / 3W+N+PE
Rated STS capacity	300kVA
<b>System Parameter</b>	
Demension(W*H*D)	1650 * 2350 * 1500 mm
Weight	≤ 3000 kg
Cycle performance	≥6000 cycles: @ 25 ± 2 °C, 0.5P, SOH ≥80%
System Efficiency	≥ 89% (Including subsidiary Power Consumption)
Fire suppression system	Aerosol / NOVEC1230 / FM200 (Support PACK level) + Flammable Gas Detection + Exhaust + Water Sprinkler System
Operating ambient temperature range	-30~55°C (-30~-20°C with Heater)
Max operating altitude	4,000m (de-rate between 2000-4000m.)
Max IP rating	IP55
Remote monitoring	Cloud EMS, Mobile APP
Certifications	IEC62619, IEC62477, IEC61000, EN50549, UN38.3
Application scenarios	On-grid & off-grid, Industrial and commercial energy storage, Micro-grid, Emergency power backup