

ReeChen

GR100A



UN38.3



Features



Safe and Reliabel

- Six Layers of Protection for Zero Accidents
- Thermal Runway Tests According to IEC62133 and GB/T36276
- Seamless Switching Between On-Grid and Off-Grid



Flexible Usage

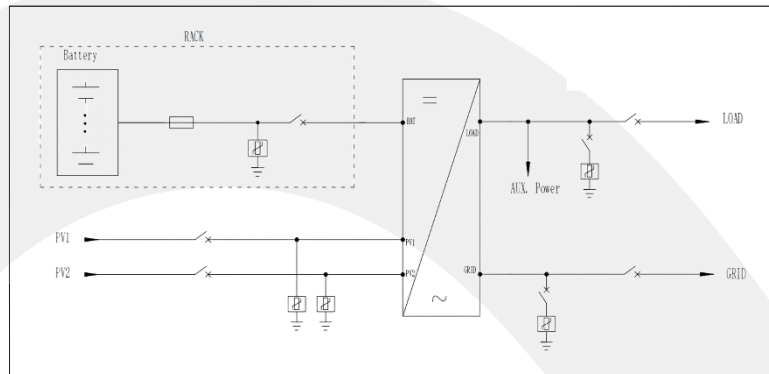
- One for All, All for One
- Applicable to Small Microgrids
- Energy Storage in Distribution Feeders, Enhancing Flexibility of the Distributor Network
- Unmanned Operation Available



Economical and Efficient

- One-Time Investment for a 20 years income
- Ultimate Integration
- Air-Cooling Design, Easy Maintenance
- CAPEX Reduced by 8%, OPEX Reduced by 5%

Electrical Diagram



Specification Parameters

Item	Specification	
	30kW	50kW
DC Side		
Battery Capacity (BOL)	100kWh	
System Configuration	112S1P	
Battery Voltage Range	302.4V~408.8V	
PV Parameter		
Max Power	19.2kW*2	15kW*4
Max Current	850V	
Startup Voltage	250V	
MPPT Voltage Range	200V~830V	
Max Input Current	32A+32A (Two Channel)	25A*4(Four Channel)
AC Side (On-Grid)		
Rated Power	30kVA	50kVA
Rated Current	50A	72.2A
Rated Voltage Range	Rated Voltage 400V, Range (-20%~15%)	
Frequency Range	50Hz/47Hz~52Hz; 60Hz/57Hz~62Hz	
Harmonic	<3% (Larger than 30% load)	
Power Factor	-1~1 (Adjustable)	
AC Side (Off-Grid)		
Rated Power	30kVA; 28kVA while battery voltage is below 320V	50kVA
Rated Current	43.5A	72.4A
Rated Voltage	400V	
Output Voltage Harmonics	<2% (Resistive Load)	
Imbalance	100%	
Frequency Range	50Hz/60Hz	
Output Overload (Current)	1.25/10s,1.5/100ms	
System Parameter		
Operating Mode	On-Grid; Off Grid	
System Efficiency	≥85% (AC side, @25±2°C, 0.33P)	
Power Factor	-1 ~ 1 (Adjustable)	
Charge and Discharge Rate	0.33P	
Cooling Concept	Air-Cooling	
Storage Temperature Range	One Month: -20°C ~ 45°C; One Year: 0°C ~ 35°C	
Operating Temperature Range	Charge: 0 ~ 55°C; Discharge: -20 ~ 55°C;	
Cycle Performance	≥6000 (@25±2°C, 0.5P, EOL≥80%)	
Max Working Altitude	≤2000m (de-rated while the altitude is over 2000m)	
Weight	1700kg	
Communication Protocols	Ethernet, 4G	
IP Rating	IP54	
Anti-corrosion Grade	C3	
Design Life	10 Years	
External Electrical Interface	Three Phase Four Wire (3W+N+PE)	
Dimension (W*D*H)	1220mm*1200mm*2000mm	